

Laserliner

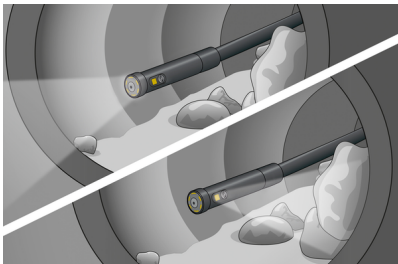
VideoFlex HD Duo



Professional, high-resolution video inspection system with front and side view option

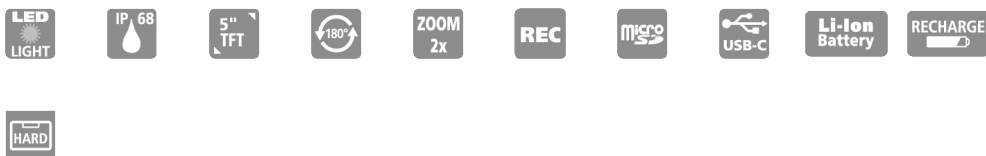
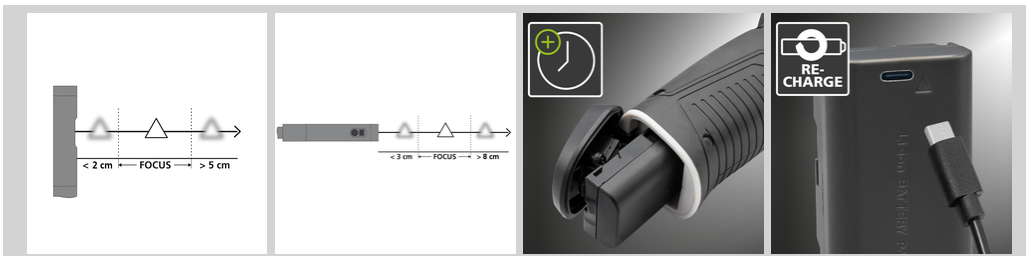
This professional video inspection system with switchable front and side view is perfect for precise visual inspection of pipework, wall cavities and motor vehicles. The high-resolution camera allows extremely detailed images and videos to be captured with 1:1 reproduction on the display with no loss of quality. The sharp digital zoom allows details to be clearly identified. Other benefits are the high-quality LED object lighting, optimum greyscale contrast reproduction, and the magnetic stand. The magnet and hook sets can be attached to the petrol and diesel resistant camera head for lifting or pulling difficult to reach objects.

- Effective problem localisation behind or in objects, walls, pipes, cavities
- Very detailed image and video capture using high-resolution camera and 1:1 reproduction on the display with no loss of quality
- Extremely clear digital zoom due to camera's high resolution
- User has both hands free to position the camera unit thanks to the magnetic stand on the base unit



TECHNICAL SPECIFICATIONS

DIAMETER CAMERA HEAD	7.9 mm
CAMERA RESOLUTION	1280 x 720 pixels
FIELD OF VIEW (FOV)	80°
DEPTH OF FOCUS (DOF)	Front: 3 ... 8 cm / Side: 2 ... 5 cm
SCREEN TYPE	5" Colour TFT
DISPLAY RESOLUTION	1280 x 720 pixels
IMAGE FORMAT	JPEG
LENGTH OF PROBE	3 m
ILLUMINATION	5 brightness levels
DIGITAL ZOOM	2x digital zoom in 10% increments
MEMORY	Micro-SD memory card up to 32 GB
PORT	USB
PORTS	USB type C
POWER SOURCE	Li-ion battery pack 3.7V / 2.6Ah Power adapter 9VDC / 2A
DIMENSIONS (W X H X D)	310 mm x 210 mm x 140 mm x (incl. holder)
WEIGHT	956 g (incl. battery pack)



VideoFlex HD Duo

ORDER NO. 082.280A

EAN-CODE 4021563713622

PU 1